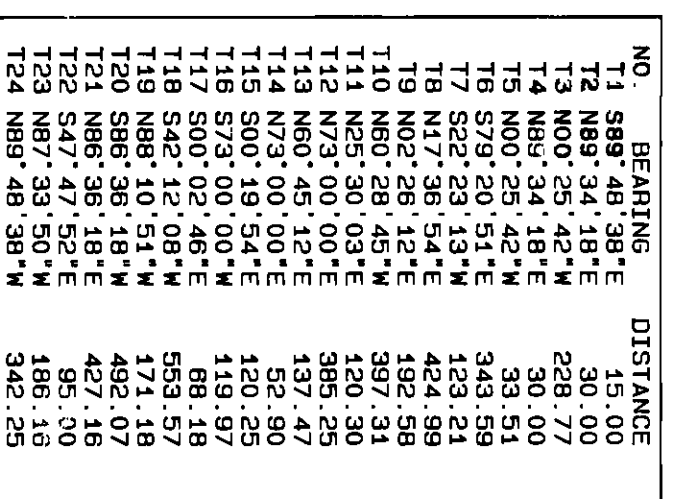
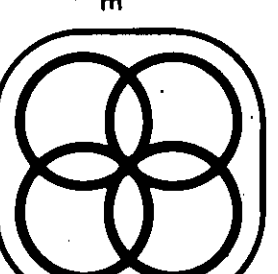


SEE PAGE CONTINUED, A CONDOMINIUM - COND DOOR 16 PAGE 94



UN	DEFIN	CHORD	DELTA	RAIUS	LENGTH	TAN
C1	570°48'10"E	459.35	17°03.21"	1461.39	440.98	222.13
C2	567°12'18"E	245.89	08°17'05"	52.82	83	123.13
C3	564°38'44"E	67.27	04°33'01"	22.40	73.78	45.48
C4	558°13'48"W	431.84	33°41'08"	750.01	423.31	45.48
C5	534°58'53"W	417.23	42°10'57"	800.00	441.73	231.42
C6	N10°48'59"E	567.05	05°32'20"	1237.00	572.97	270.07
C7	N08°47'26"E	555.15	15°34'54"	1874.01	536.81	231.02
C8	N08°28'37"E	58.51	73°02'46"	50.00	83.74	97.03
C9	N08°31'23"E	80.36	106°57'14"	50.00	93.33	67.51
C10	N7°29'43"E	692.30	12°08'12"	3060.00	693.79	346.39
C11	N05°57'50"E	7.07	00°33'26"	7584.33	7.07	3.54
C12	N05°28'50"E	865.51	75°08'46"	2940.00	865.54	524.05
C13	S10°02'14"W	1052.90	20°10'00"	2949.79	1058.26	524.55
C14	S09°48'48"W	132.14	03°50'39"	1459.96	132.16	68.10
C17	S08°51'25"E	72.62	03°04'34"	456.90	72.69	36.42

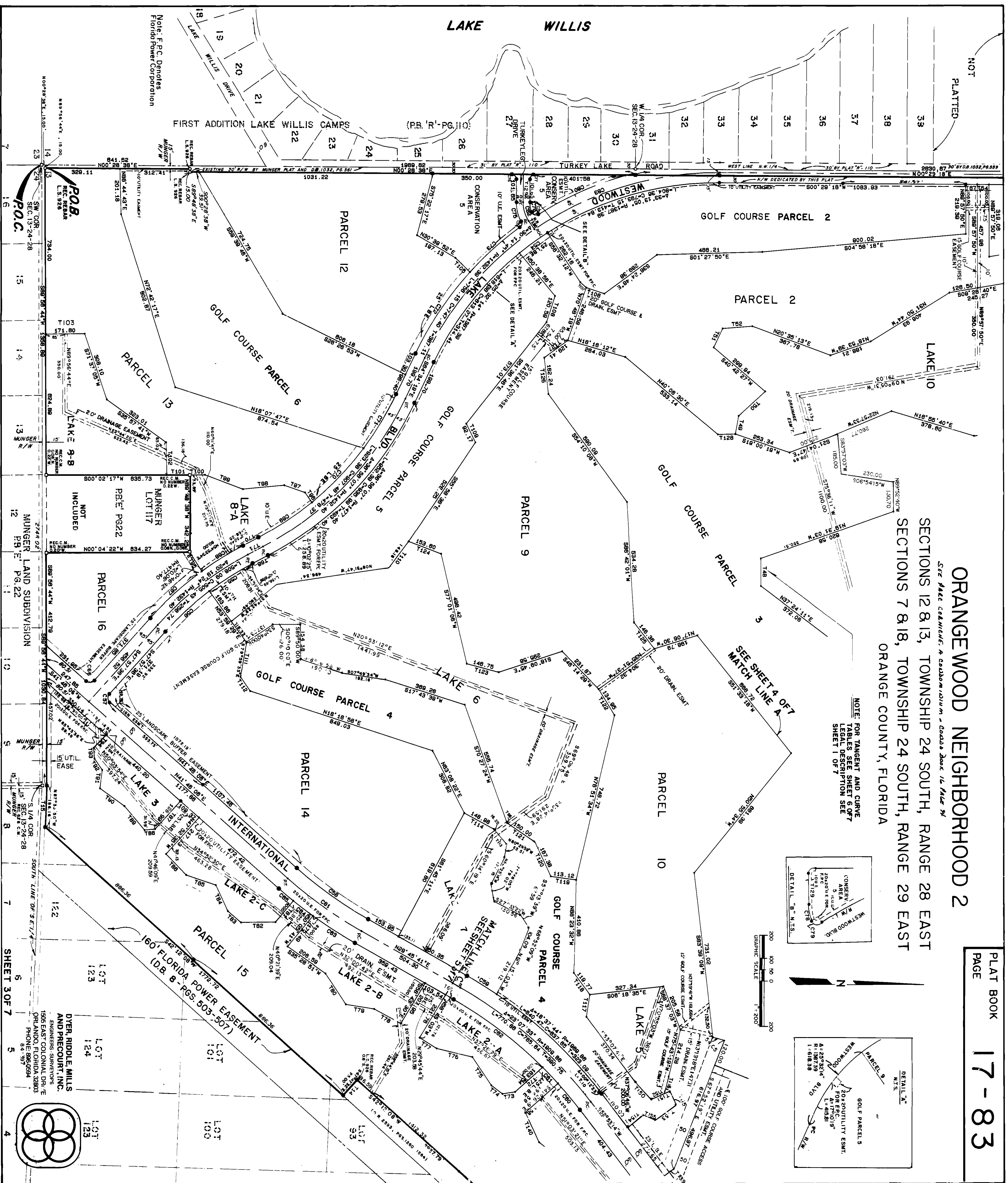


SEE PAGE COLNICH, A COMBINATION - COMBO BOOK 16 PAGES 94

ORANGE COUNTY, FLORIDA

NOTE: FOR TANGENT AND CURVE
TABLES SEE SHEET 6 OF 7
LEGAL DESCRIPTION SEE
SHEET 1 OF 7

17-83



-SEE PAGE COMMENT. A CONDOMINIUM - CONDO DOOR 16 PAGE 94

SECTIONS 12 & 13, TOWNSHIP 24 SOUTH, RANGE 28 EAST
SECTIONS 7 & 18, TOWNSHIP 24 SOUTH, RANGE 29 EAST
ORANGE COUNTY, FLORIDA

NOT
PLATTED

CENTRAL FLORIDA PARKWAY

PARCEL 4 | MUNGER LOT

PARCEL 5

NOTE: FOR CURVE AND TANGENT TABLES SEE SHEET 6 OF 7. LEGAL DESCRIPTION SEE SHEET 7 OF 7.

NOT PLATTED

792.04' MEAS.
CH LINE B
N00° 22' 48" W
SEE 792.44 SHEET
5 OF 7

FIRST ADDITION TO LAKE WILLIS
CAMPS (P.B. "R", PG. 10)

NOT
PLATTED

TURKEY LAKE ROAD

GOLF COURSE PARCEL 2

GOLF	COURSE
------	--------

PARCEL 2

PARCEL 8

PARCEL 4

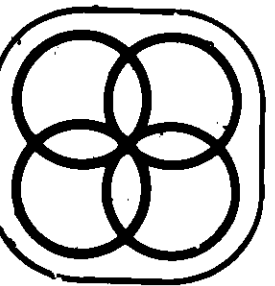
NOT INCLUDED

PARCEL 5

PARCEL 11

SHEET 4 OF 7

**DYER, RIDDELL, MILLS
AND PRECOURT, INC.**
ENGINEERS - SURVEYORS
1505 EAST COLONIAL DRIVE
ORLANDO, FLORIDA 32803
PHONE: 896-0594
84-397



GRAPHIC SCALE: 1"=200'

SECTIONS 12 & 13 TOWNSHIP 24 SOUTH, RANGE 28 EAST
& SECTIONS 7 & 18 TOWNSHIP 24 SOUTH, RANGE 29 EAST

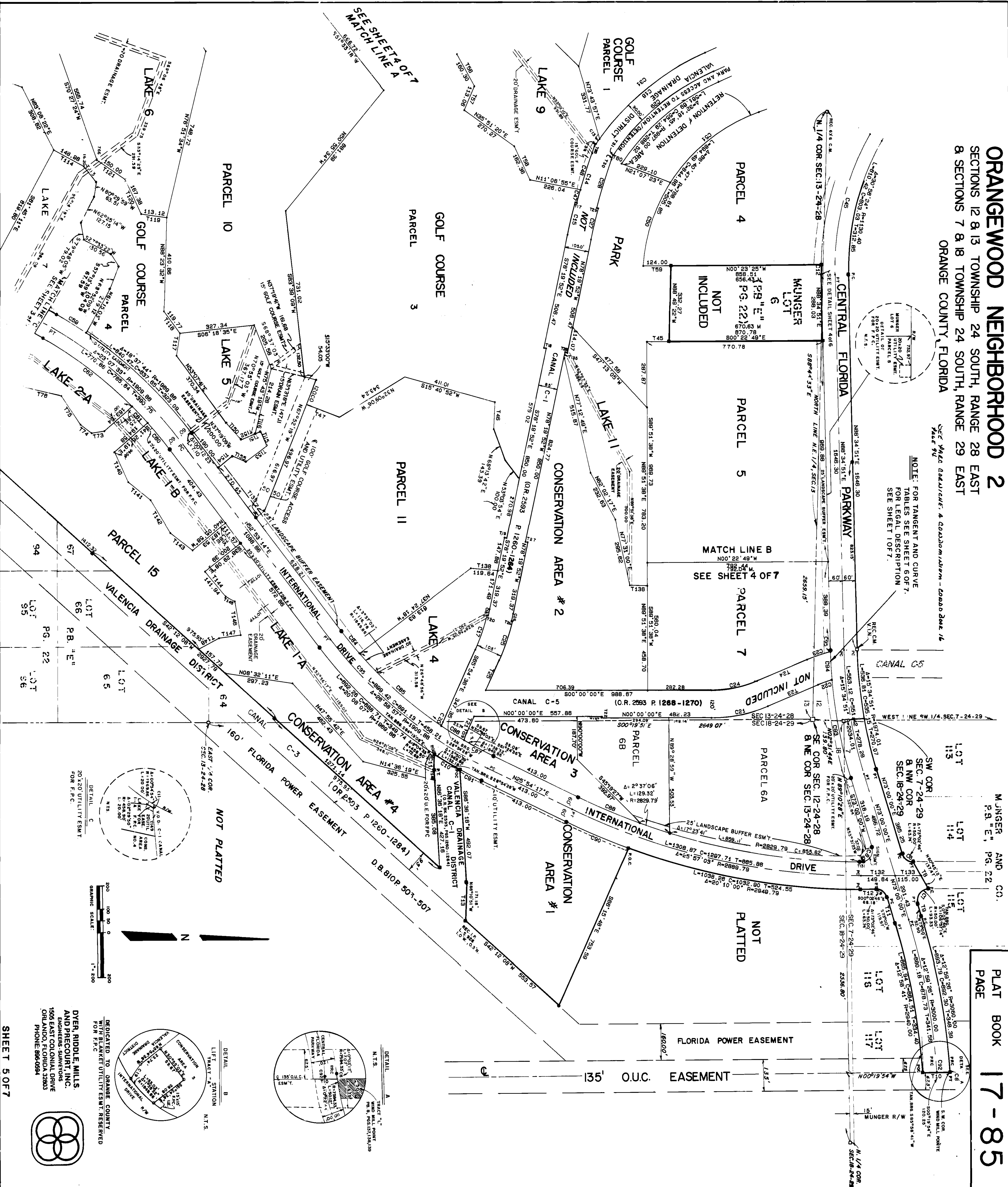
ORANGE COUNTY, FLORIDA

SEE PAGE COLEMAN, A CONDOMINIUM - GOOD BOOK 16
PAGE 94

NOTE: FOR TANGENT AND CURVE TABLES SEE SHEET 6 OF 7 FOR LEGAL DESCRIPTION, SEE SHEET 10 OF 7.

MUNGER AND CO.
P.O. "E" P.O. 221

PLAT BOOK 17-85
PAGE



ORANGEWOOD - NEIGHBORHOOD 2

SEE PAGE CONTINUED, A CONDOMINIUM - COMM DOCK 16 PAGE 94

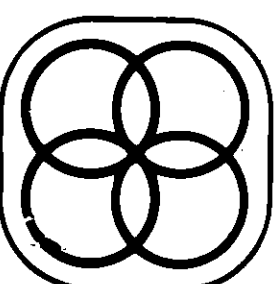
SECTIONS 12 & 13, TOWNSHIP 24 SOUTH, RANGE 28 EAST
SECTIONS 7 & 18, TOWNSHIP 24 SOUTH, RANGE 29 EAST
ORANGE COUNTY, FLORIDA

CURVE TABLE

	NO.	BEARING	CHORD	DELTA	PAIDUS	LENGTH	TAN
	C1	570	49.10	17.03	1481.39	440.98	222.13
	C2	578	12.18	8.17	2242.83	246.01	128.13
	C3	576	12.48	8.17	2242.83	246.01	128.13
	C4	574	12.48	8.17	2242.83	246.01	128.13
	C5	572	12.48	8.17	2242.83	246.01	128.13
	C6	570	12.48	8.17	2242.83	246.01	128.13
	C7	568	28.37	13.02	1600.00	441.73	231.42
	C8	566	28.37	13.02	1600.00	441.73	231.42
	C9	564	28.37	13.02	1600.00	441.73	231.42
	C10	562	28.37	13.02	1600.00	441.73	231.42
	C11	560	28.37	13.02	1600.00	441.73	231.42
	C12	558	28.37	13.02	1600.00	441.73	231.42
	C13	556	28.37	13.02	1600.00	441.73	231.42
	C14	554	28.37	13.02	1600.00	441.73	231.42
	C15	552	28.37	13.02	1600.00	441.73	231.42
	C16	550	28.37	13.02	1600.00	441.73	231.42
	C17	548	28.37	13.02	1600.00	441.73	231.42
	C18	546	28.37	13.02	1600.00	441.73	231.42
	C19	544	28.37	13.02	1600.00	441.73	231.42
	C20	542	28.37	13.02	1600.00	441.73	231.42
	C21	540	28.37	13.02	1600.00	441.73	231.42
	C22	538	28.37	13.02	1600.00	441.73	231.42
	C23	536	28.37	13.02	1600.00	441.73	231.42
	C24	534	28.37	13.02	1600.00	441.73	231.42
	C25	532	28.37	13.02	1600.00	441.73	231.42
	C26	530	28.37	13.02	1600.00	441.73	231.42
	C27	528	28.37	13.02	1600.00	441.73	231.42
	C28	526	28.37	13.02	1600.00	441.73	231.42
	C29	524	28.37	13.02	1600.00	441.73	231.42
	C30	522	28.37	13.02	1600.00	441.73	231.42
	C31	520	28.37	13.02	1600.00	441.73	231.42
	C32	518	28.37	13.02	1600.00	441.73	231.42
	C33	516	28.37	13.02	1600.00	441.73	231.42
	C34	514	28.37	13.02	1600.00	441.73	231.42
	C35	512	28.37	13.02	1600.00	441.73	231.42
	C36	510	28.37	13.02	1600.00	441.73	231.42
	C37	508	28.37	13.02	1600.00	441.73	231.42
	C38	506	28.37	13.02	1600.00	441.73	231.42
	C39	504	28.37	13.02	1600.00	441.73	231.42
	C40	502	28.37	13.02	1600.00	441.73	231.42
	C41	500	28.37	13.02	1600.00	441.73	231.42
	C42	498	28.37	13.02	1600.00	441.73	231.42
	C43	496	28.37	13.02	1600.00	441.73	231.42
	C44	494	28.37	13.02	1600.00	441.73	231.42
	C45	492	28.37	13.02	1600.00	441.73	231.42
	C46	490	28.37	13.02	1600.00	441.73	231.42
	C47	488	28.37	13.02	1600.00	441.73	231.42
	C48	486	28.37	13.02	1600.00	441.73	231.42
	C49	484	28.37	13.02	1600.00	441.73	231.42
	C50	482	28.37	13.02	1600.00	441.73	231.42
	C51	480	28.37	13.02	1600.00	441.73	231.42
	C52	478	28.37	13.02	1600.00	441.73	231.42
	C53	476	28.37	13.02	1600.00	441.73	231.42
	C54	474	28.37	13.02	1600.00	441.73	231.42
	C55	472	28.37	13.02	1600.00	441.73	231.42
	C56	470	28.37	13.02	1600.00	441.73	231.42
	C57	468	28.37	13.02	1600.00	441.73	231.42
	C58	466	28.37	13.02	1600.00	441.73	231.42
	C59	464	28.37	13.02	1600.00	441.73	231.42
	C60	462	28.37	13.02	1600.00	441.73	231.42
	C61	460	28.37	13.02	1600.00	441.73	231.42
	C62	458	28.37	13.02	1600.00	441.73	231.42
	C63	456	28.37	13.02	1600.00	441.73	231.42
	C64	454	28.37	13.02	1600.00	441.73	231.42
	C65	452	28.37	13.02	1600.00	441.73	231.42
	C66	450	28.37	13.02	1600.00	441.73	231.42
	C67	448	28.37	13.02	1600.00	441.73	231.42
	C68	446	28.37	13.02	1600.00	441.73	231.42
	C69	444	28.37	13.02	1600.00	441.73	231.42
	C70	442	28.37	13.02	1600.00	441.73	231.42
	C71	440	28.37	13.02	1600.00	441.73	231.42
	C72	438	28.37	13.02	1600.00	441.73	231.42
	C73	436	28.37	13.02	1600.00	441.73	231.42
	C74	434	28.37	13.02	1600.00	441.73	231.42
	C75	432	28.37	13.02	1600.00	441.73	231.42
	C76	430	28.37	13.02	1600.00	441.73	231.42
	C77	428	28.37	13.02	1600.00	441.73	231.42
	C78	426	28.37	13.02	1600.00	441.73	231.42
	C79	424	28.37	13.02	1600.00	441.73	231.42
	C80	422	28.37	13.02	1600.00	441.73	231.42
	C81	420	28.37	13.02	1600.00	441.73	231.42
	C82	418	28.37	13.02	1600.00	441.73	231.42
	C83	416	28.37	13.02	1600.00	441.73	231.42
	C84	414	28.37	13.02	1600.00	441.73	231.42
	C85	412	28.37	13.02	1600.00	441.73	231.42
	C86	410	28.37	13.02	1600.00	441.73	231.42
	C87	408	28.37	13.02	1600.00	441.73	231.42
	C88	406	28.37	13.02	1600.00	441.73	231.42
	C89	404	28.37	13.02	1600.00	441.73	231.42
	C90	402	28.37	13.02	1600.00	441.73	231.42
	C91	400	28.37	13.02	1600.00	441.73	231.42
	C92	398	28.37	13.02	1600.00	441.73	231.42
	C93	396	28.37	13.02	1600.00	441.73	231.42
	C94	394	28.37	13.02	1600.00	441.73	231.42
	C95	392	28.37	13.02	1600.00	441.73	231.42
	C96	390	28.37	13.02	1600.00	441.73	231.42
	C97	388	28.37	13.02	1600.00	441.73	231.42
	C98	386	28.37	13.02	1600.00	441.73	231.42
	C99	384	28.37	13.02	1600.00	441.73	231.42
	C100	382	28.37	13.02	1600.00	441.73	231.42
	C101	380	28.37	13.02	1600.00	441.73	231.42
	C102	378	28.37	13.02	1600.00	441.73	231.42
	C103	376	28.37	13.02	1600.00	441.73	231.42
	C104	374	28.37	13.02	1600.00	441.73	231.42
	C105	372	28.37	13.02	1600.00	441.73	231.42
	C106	370	28.37	13.02	1600.00	441.73	231.42
	C107	368	28.37	13.02	1600.00	441.73	231.42
	C108	366	28.37	13.02	1600.00	441.73	231.42
	C109	364	28.37	13.02	1600.00	441.73	231.42
	C110	362	28.37	13.02	1600.00	441.73	231.42
	C111	360	28.37	13.02	1600.00	441.73	231.42
	C112	358	28.37	13.02	1600.00	441.73	231.42
	C113	356	28.37	13.02	1600.00	441.73	231.42
	C114	354	28.37	13.02	1600.00	441.73	231.42
	C115	352	28.37	13.02	1600.00	441.73	231.42
	C116	350	28.37	13.02	1600.00	441.73	231.42
	C117	348	28.37	13.02	1600.00	441.73	231.42
	C118	346	28.37	13.02	1600.00	441.73	231.42
	C119	344	28.37	13.02	1600.00	441.73	231.42
	C120	342	28.37	13.02	1600.00	441.73	231.42
	C121	340	28.37	13.02	1600.00	441.73	231.42
	C122	338	28.37	13.02	1600.00	441.73	231.42
	C123	336	28.37	13.02	1600.00	441.73	231.42
	C124	334	28.37	13.02	1600.00	441.73	231.42
	C125	332	28.37	13.02	1600.00	441.73	231.42
	C126	330	28.37	13.02	1600.00	441.73	231.42
	C127	328	28.37	13.02	1600.00	441.73	231.42
	C128	326	28.37	13.02	1600.00	441.73	231.42
	C129	324	28.37	13.02	1600.00	441.73	231.42
	C130	322	28.37	13.02	1600.00	441.73	231.42
	C131	320	28.37	13.02	1600.00	441.73	231.42
	C132	318	28.37	13.02	1600.00	441.73	231.42
	C133	316	28.37	13.02	1600.00	441.73	231.42
	C134	314	28.37	13.02	1600.00	441.73	231.42
	C135	312	28.37	13.02	1600.00	441.73	231.42
	C136	310	28.37	13.02	1600.00	441.73	231.42
	C137	308	28.37	13.02	1600.00	441.73	231.42
	C138	306	28.37	13.02	1600.00	441.73	231.42
	C139	304	28.37	13.02	1600.00	441.73	231.42
	C140	302	28.37	13.02	1600.00	441.73	231.42
	C141	300	28.37	13.02	1600.00	441.73	231.42
	C142	298	28.37	13.02	1600.00	441.73	231.42
	C143	296	28.37	13.02	1600.00	441.73	231.42
	C144	294	28.37	13.02	1600.00	441.73	231.42
	C145	292	28.37	13.02	1600.00	441.73	231.42
	C146	290	28.37	13.02	1600.00	441.73	231.42
	C147	288	28.37	13.02	1600.00	441.73	231.42
	C148	286	28.37	13.02	1600.00	441.73	231.42
	C149	284	28.37	13.02	1600.00	441.73	231.42
	C150	282	28.37	13.02	1600.00	441.73	231.42
	C151	280	28.37	13.02	1600.00	441.73	231.42
	C152	278	28.37	13.02	1600.00	441.73	231.42
	C153	276	28.37	13.02	1600.00	441.73	231.42
	C154	274	28.37	13.02	1600.00	441.73	231.42
	C155	272	28.37	13.02	1600.00	441.73	231.42
	C156	270	28.37	13.02	1600.00	441.73	231.42
	C157	268	28.37	13.02	1600.00	441.73	231.42
	C158	266	28.37	13.02	1600.00	441.73	231.42
	C159	264	28.37	13.02	1600.00	441.73	231.42
	C160	262	28.37	13.0			

LINE TABLES

NO.	BEARING	DISTANCE
11	S 89° 48' 38" E	15.00
12	N 88° 34' 18" E	30.00
13	N 88° 34' 18" E	30.00
14	N 88° 34' 18" E	30.00
15	S 82° 23' 43" W	123.21
16	N 02° 26' 12" E	192.58
17	N 02° 30' 03" E	127.40
18	N 00° 45' 12" E	130.37
19	N 00° 00' 00" E	52.96
20	N 00° 00' 00" E	116.97
21	S 73° 00' 00" E	419.57
22	S 00° 02' 46" E	88.18
23	N 88° 10' 51" E	171.18
24	S 24° 47' 52" E	85.00
25	N 11° 52' 17" E	23.17
26	S 14° 37' 46" W	6.00
27	S 14° 37' 46" W	10.00
28	N 11° 40' 08" E	10.00
29	N 10° 40' 08" E	10.00
30	N 10° 40' 08" E	10.00
31	N 10° 40' 08" E	10.00
32	N 10° 40' 08" E	10.00
33	N 10° 40' 08" E	10.00
34	N 10° 40' 08" E	10.00
35	N 10° 40' 08" E	10.00
36	N 10° 40' 08" E	10.00
37	N 10° 40' 08" E	10.00
38	N 10° 40' 08" E	10.00
39	N 10° 40' 08" E	10.00
40	N 10° 40' 08" E	10.00
41	N 10° 40' 08" E	10.00
42	N 10° 40' 08" E	10.00
43	N 10° 40' 08" E	10.00
44	N 10° 40' 08" E	10.00
45	N 10° 40' 08" E	10.00
46	N 10° 40' 08" E	10.00
47	N 10° 40' 08" E	10.00
48	N 10° 40' 08" E	10.00
49	N 10° 40' 08" E	10.00
50	N 10° 40' 08" E	10.00
51	N 10° 40' 08" E	10.00
52	N 10° 40' 08" E	10.00
53	N 10° 40' 08" E	10.00
54	N 10° 40' 08" E	10.00
55	N 10° 40' 08" E	10.00
56	N 10° 40' 08" E	10.00
57	N 10° 40' 08" E	10.00
58	N 10° 40' 08" E	10.00
59	N 10° 40' 08" E	10.00
60	N 10° 40' 08" E	10.00
61	N 10° 40' 08" E	10.00
62	N 10° 40' 08" E	10.00
63	N 10° 40' 08" E	10.00
64	N 10° 40' 08" E	10.00
65	N 10° 40' 08" E	10.00
66	N 10° 40' 08" E	10.00
67	N 10° 40' 08" E	10.00
68	N 10° 40' 08" E	10.00
69	N 10° 40' 08" E	10.00
70	N 10° 40' 08" E	10.00
71	N 10° 40' 08" E	10.00
72	N 10° 40' 08" E	10.00
73	N 10° 40' 08" E	10.00
74	N 10° 40' 08" E	10.00
75	N 10° 40' 08" E	10.00
76	N 10° 40' 08" E	10.00
77	N 10° 40' 08" E	10.00
78	N 10° 40' 08" E	10.00
79	N 10° 40' 08" E	10.00
80	N 10° 40' 08" E	10.00
81	N 10° 40' 08" E	10.00
82	N 10° 40' 08" E	10.00
83	N 10° 40' 08" E	10.00
84	N 10° 40' 08" E	10.00
85	N 10° 40' 08" E	10.00
86	N 10° 40' 08" E	10.00
87	N 10° 40' 08" E	10.00
88	N 10° 40' 08" E	10.00
89	N 10° 40' 08" E	10.00
90	N 10° 40' 08" E	10.00
91	N 10° 40' 08" E	10.00
92	N 10° 40' 08" E	10.00
93	N 10° 40' 08" E	10.00
94	N 10° 40' 08" E	10.00
95	N 10° 40' 08" E	10.00
96	N 10° 40' 08" E	10.00
97	N 10° 40' 08" E	10.00
98	N 10° 40' 08" E	10.00
99	N 10° 40' 08" E	10.00
100	N 10° 40' 08" E	10.00

[illegible]

SEE PAGE COLUMNAR, A CONDOMINIUM - GOOD BOOK IS PAGE 94

LANDS LOCATED IN

PLAT BOOK 17 PAGE 87

ORANGECREEK NEIGHBORHOOD - 2

DEDICATION

KNOW ALL MEN BY THESE PRESENTS, That the General Partnership below, being the owner in fee simple of the lands described in the foregoing caption to this plat, hereby dedicates said lands and plot for the uses and purposes therein expressed and dedicates the STREETS

--- EASEMENTS & TRACT Y^o --- shown hereon to the ---

IN WITNESS WHEREOF, has caused these presents to be signed and entered to by the General Partners named below, 4-11-1986

---WESTWOOD LAKES ASSOCIATES,---
A FLORIDA GENERAL PARTNERSHIP
BY NEWLON & COMPANY INC.
AN AUTHORIZED GENERAL PARTNER

James H. Newlon
JAMES H. NEWLON PRESIDENT

AND

By W.E. SPEARS AND ASSOCIATES INC.
AN AUTHORIZED GENERAL PARTNER

W. E. Spears
W.E. SPEARS PRESIDENT

STATE OF COUNTY OF

THIS IS TO CERTIFY, That on April 11, 1986

before me an officer duly authorized to take acknowledgements in the State and County aforesaid, personally appeared JAMES H. NEWLON, PRESIDENT OF NEWLON & COMPANY INC. AND W.E. SPEARS PRESIDENT OF W.E. SPEARS AND ASSOCIATES INC.

of the above named General Partnership & to me known to be the individuals and General Partners described in and who executed the foregoing Dedication and severally acknowledged the execution thereof to be their free act and deed as such General Partners hereunto duly authorized, that the official seal of said General Partnership is duly affixed thereto and that the said Dedication is the act and deed of said General Partnership

IN WITNESS WHEREOF, I have hereto set my hand and seal on the above date.

Notary Public
G. M. McDaniel

My Commission Expires MAY 16, 1989

James H. Newlon
W. E. Spears